



## ML308 / ML309 / ML310 D Pull Handle

### Material Specifications

- #304 Stainless Steel

### Dimensions

- ML308:** 100mmL x 10mmØ 
- ML309:** 96.5mmL x 0.8mmØ
- ML310:** 152mmL x 12mmØ 

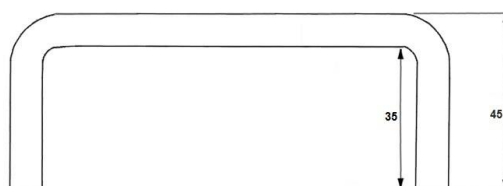
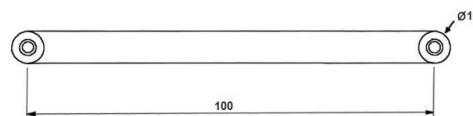
### Mounting

- Surface Mount Visible Fix

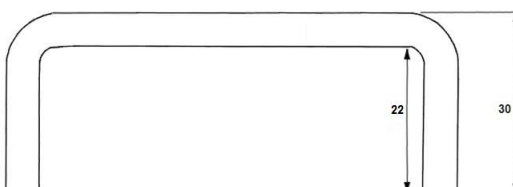
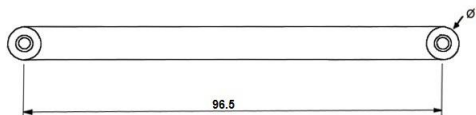
### Installation Guidelines

- May be subject to Australian Building Code Regulations for height and location fixing and may be subject to placement as per architectural drawings. In all cases, this is the responsibility of the installer.

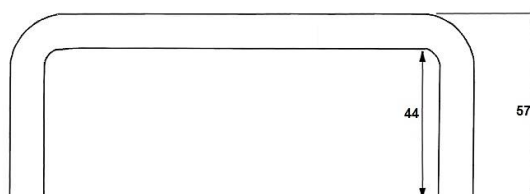
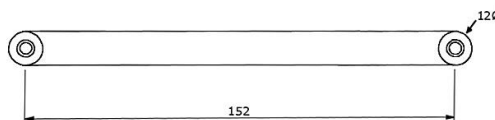
- Determine the mounting location and height on the back of the door, both horizontally and vertically.
- Draw a vertical centreline using a spirit level at the desired distance from the door edge.
- Using the Centre to Centre measurements of the handle, mark the distance on the door, ensuring the centreline matches up.
- Drill the holes through the door, using the marked points.
- Place handle on the front of the door, lining up the holes in the handle to the holes that are drilled into the door.
- Screw the handle into place and check the unit is level to finish installation.



**\*ML308**



**\*ML309**



**\*ML310**

The photographs and line drawings of the products presented above are representational only. Metlam Australia Pty Ltd reserves the right to, and from time to time, make changes and improvements in design and dimensions.



This product is AS1428.1 compliant (accessible compliant) when installed in accordance with the guidelines.

*The technical recommendations contained in this document are necessarily of a general nature and should not be relied on for specific applications without first securing competent advice. Whilst Metlam Australia Pty Ltd has taken all reasonable steps to ensure the information contained herein is accurate and current, it does not warrant the accuracy or completeness of the information and does not accept liability for errors or omissions. Any Commercial product should only be installed by a competent tradesperson and serviced/maintained by knowledgeable janitorial staff or competent people. Metlam Australia accepts no responsibility for any damage to product, walls or fixtures due to incorrect installation or maintenance of any of their products.*

The photographs and line drawings of the products presented above are representational only.  
Metlam Australia Pty Ltd reserves the right to, and from time to time, make changes and improvements in design and dimensions.